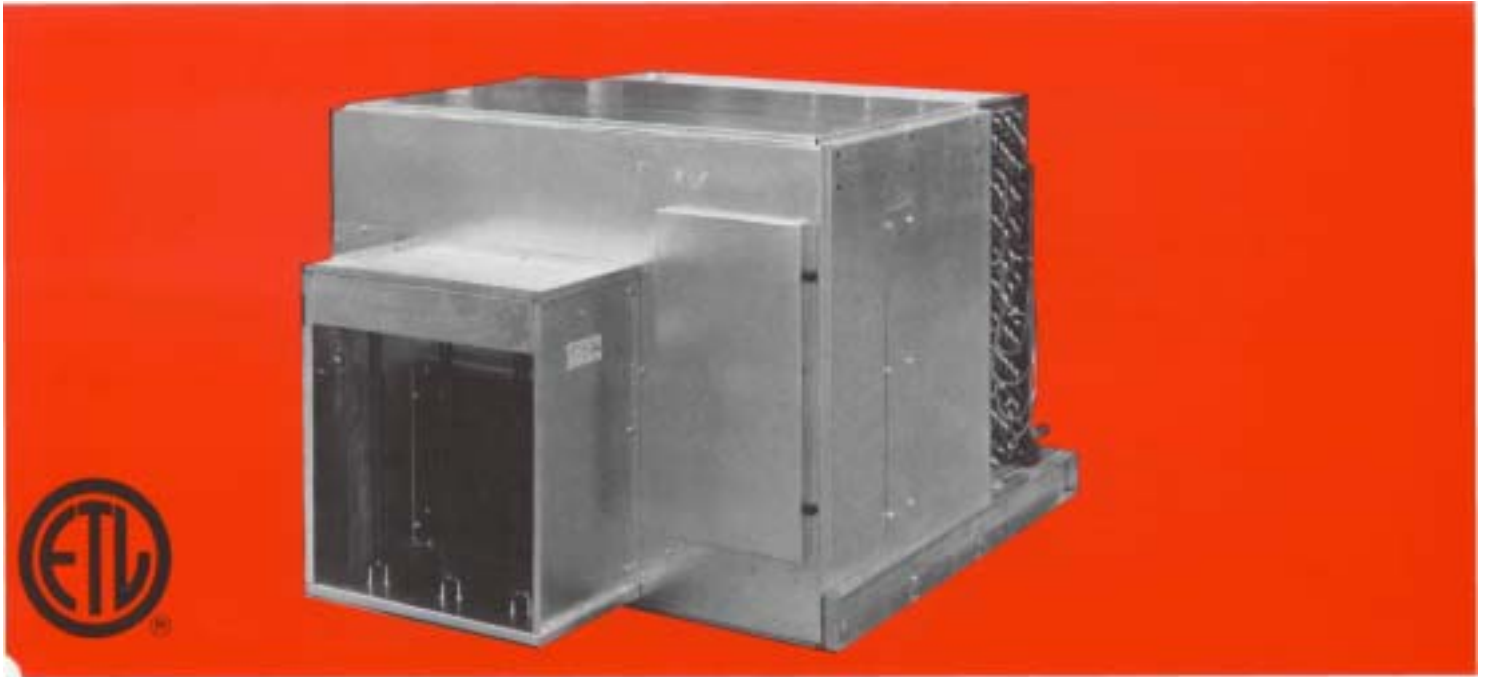




# RIPENING ROOM PRODUCT COOLER

**PCU-845A**  
JANUARY 1993  
SUPERSEDES  
PCU-845



Designed expressly for Storing & Ripening

Bananas and

Tomatoes

## STANDARD FEATURES

### CENTRIFUGAL BLOWERS

Oversized Class II blower wheels High CFM per Ton Low brake horsepower 200,000 hour pillow-block bearings Extended bearing lube lines Thermally protected drive motors Fixed drive sheaves

### COOLING COILS

High capacity DX Halocarbon 1/2" OD copper tube, aluminum fins Multi-circuit w/refrigerant distributor Fixed air bypass for precise air velocity

### UNIT CASING

Industrial grade construction throughout All-galvanized casing parts Nut and bolt final assembly

### SERVICE AND MAINTENANCE ACCESS

Large drive-side door w/lift-off hinges Bearing access panel opposite drive side Removable blower section bottom panel Removable air bypass grills (each side) Easy replacement-Wheel & shaft

### ETL LISTING

Standard on unit and all catalog options

## OPTIONAL FEATURES

### ELECTRIC HEAT SECTION

Stainless steel sheath heater elements Blower discharge mounting Two safety thermostats - manual + auto reset ETL Listed

### SINGLE POINT WIRING

One conduit to J-Box distribution point

### SYSTEM CONTROL PANEL

All power components for Product Cooler All system control components (as required) ETL Listed

### COOLING COIL OPTIONS

Hot gas bypass provision Special tube/fin materials Glycol coils (used with Ammonia chillers) Rows up to 12 deep

## ORDERING INFORMATION

### SYSTEM CONTROL PANEL

All power components for Product Cooler All system control components (as required) ETL Listed

1. Complete Model Number
2. Room Temperature
3. Suction Temperature
4. Electrical Characteristics

#### 5. Options Required

- Hot Gas Bypass
- Provision Electric
- Heat Section
- Single Point Wiring
- System Control Panel
- Others (Specify)

## PERFORMANCE DATA - BTUH COOLING

**TABLE 1**

MODEL NUMBER	70 ROOM 60 ST.	60 ROOM 50 ST.	55 ROOM 45 ST.	55 ROOM 40 ST.	35 ROOM 25 ST.
PCU--144	35400	32100	31000	50800	28100
PCU—154	42600	38500	37000	60800	33500
PCU--164	49100	44300	42600	69700	38300
PCU—146	41300	38000	36700	60700	34000
PCU—156	49300	45100	43500	71600	40000
PCU--166	56500	51500	49500	81300	45100
PCU—244	77400	70300	67800	111200	61500
PCU—254	93100	84100	81000	132900	73100
PCU—264	107400	96900	93100	152300	83700
PCU—246	89400	83000	80300	132700	74300
PCU-256	107800	98600	95000	159700	87500
PCU-266	123500	112500	108200	177900	98600

# TECHNICAL DATA

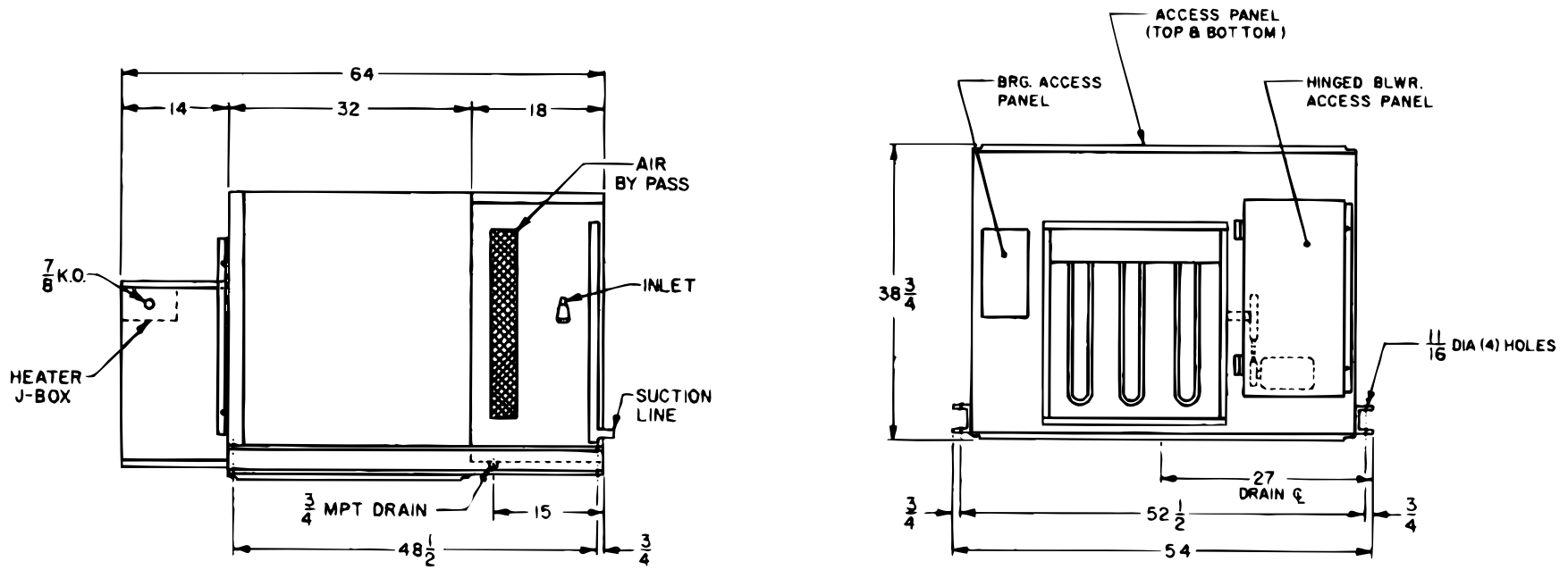


FIGURE 1

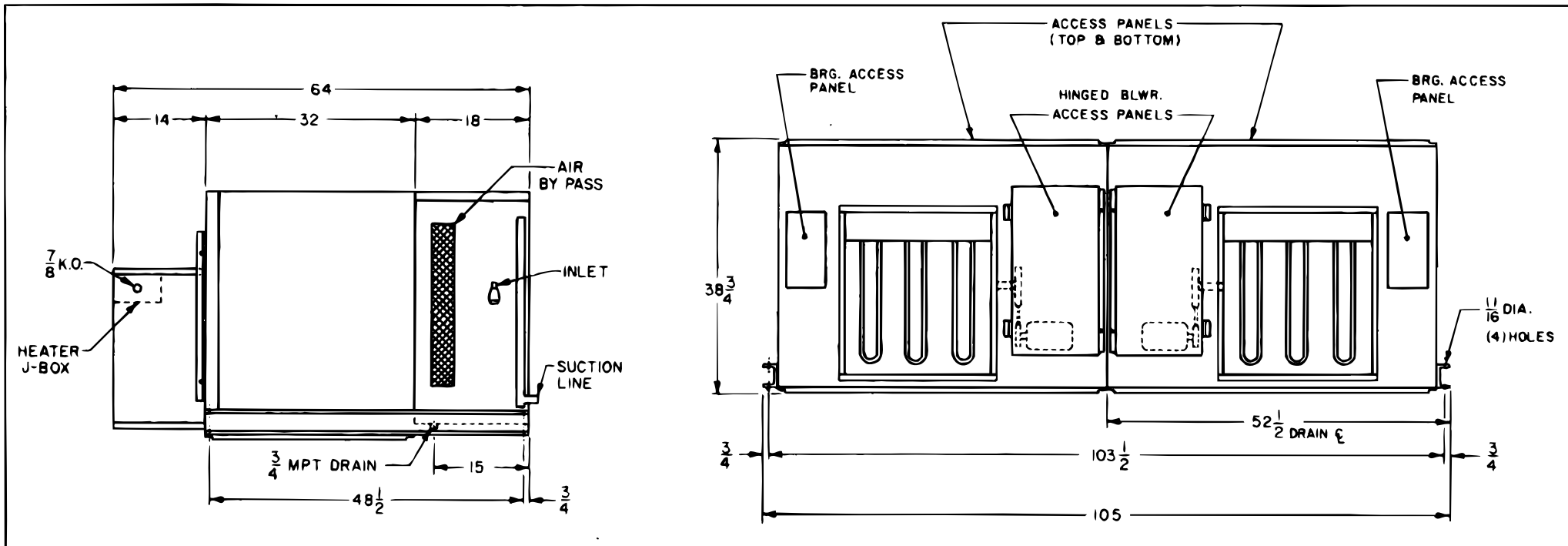


FIGURE 2

For your convenience the diagram(s) originally here  
has(have) been enlarged, and can be found just prior to this  
page in the Adobe document.

**TABLE 2**

MODEL NUMBER	FIG.	AIR FLOW CFM	MOTOR			OPTIONAL ELEC. HTR. KW	CONNECTION SIZE (in)		WEIGHT (lbs)
			QTY	HP	FLA 230/3/60		INLET	OUTLET	
PCU-144	1	7800	1	2	6.2	6	7/8	7/8	530
PCU-154	1	7800	1	2	6.2	6	7/8	7/8	560
PCU— 164	1	7800	1	2	6.2	6	7/8	1-1/8	570
PCU— 146	1	7800	1	2	6.2	6	7/8	7/8	570
PCU-156	1	7800	1	2	6.2	6	7/8	1-1/8	600
PCU— 166	1	7800	1	2	6.2	6	7/8	1-1/8	610
PCU— 244	2	15600	2	2	12.4	12	1-1/8	1-3/8	1070
PCU— 254	2	15600	2	2	12.4	12	1-1/8	1-3/8	1130
PCU-264	2	15600	2	2	12.4	12	1-1/8	1-3/8	1160
PCU— 246	2	15600	2	2	12.4	12	1-1/8	1-3/8	1150
PCU— 256	2	15600	2	2	12.4	12	1-1/8	1-3/8	1210
PCU— 266	2	15600	2	2	12.4	12	1-3/8	1-5/8	1240

## CONTROL PANEL OPTIONS

The model RRP control panel is available in the configurations needed for most installations.

### TYPE I - POWER PANEL ONLY

Main Fused Disconnect w/Door Interlock  
Product Cooler Fan Motor Contactor  
Product Cooler Heater Contactor (As Required)  
Control Transformer (As Required)  
Control Terminal Block  
Heavy Gage Galvanized casing

For use with solid state thermostat/mode selector module (by others).

### TYPE II - COMPLETE PANEL

Ripening Room Thermostats  
Five position Mode Selector Switch  
Mode Indicator Pilot Lights  
Control Viewing Window  
Separate Control Access Door w/Key Lock  
All Components Furnished w/Type I

For use on installations in which the control panel can be mounted outside the ripening room, near the Product Cooler return air stream for remote bulb temperature sensing.

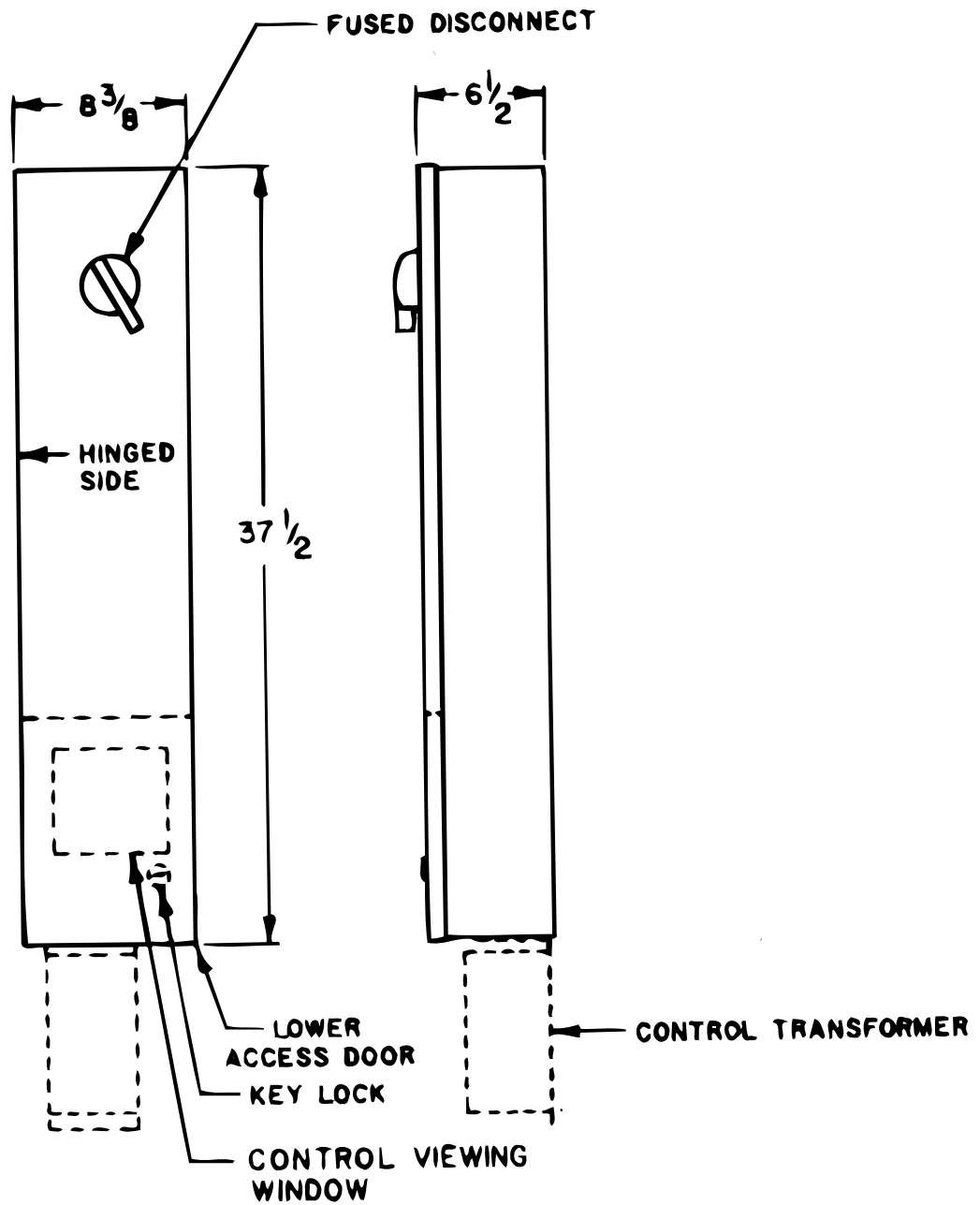
### TYPE III - MAIN PANEL + REMOTE CONTROL MODULE (Not ETL Listed)

- Main Panel  
Same as Type I above
- Remote Control Module  
Control Components - Same as Type II above  
Galvanized Casing Control Viewing Window  
Keylock Door

For use on installations in which available control mounting area is too small for Type II panel mount (e.g. narrow mullion between rooms). Remote control module is designed to fit; for either flush or recess mount.

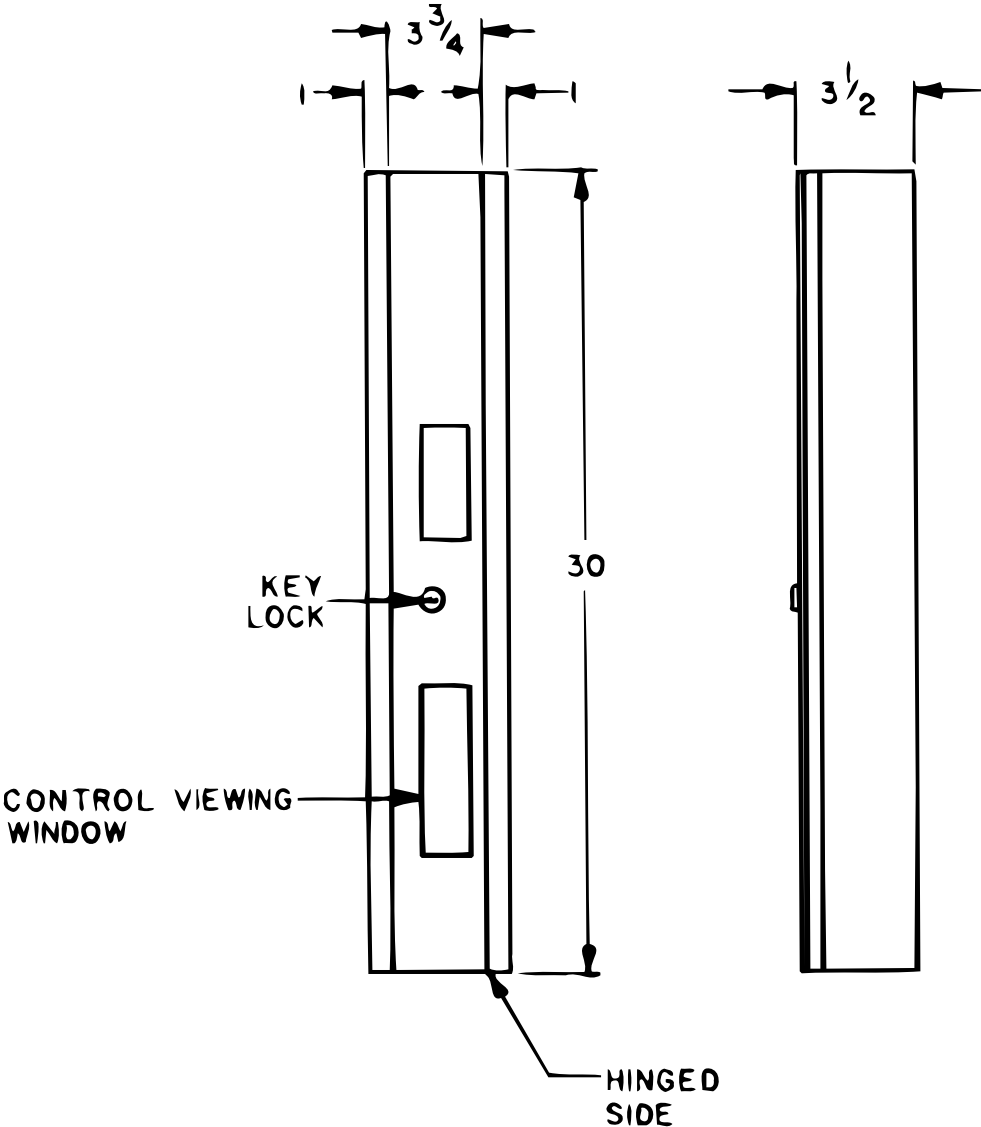
For your convenience the diagram(s) originally here has(have) been enlarged, and can be found just after this page in the Adobe document.

**TYPE I**  
**TYPE II**



Specifications and dimensions subject to change without notice.

# TYPE III REMOTE CONTROL MODULE



Specifications and dimensions subject to change without notice.