



TV EVAPORATOR

HOT GAS DEFROST

SUBMITTAL
TV-789F
 NOV. 1994
 SUPERCEDES
 TV-789E



Description:

The TV model unit coolers are specifically designed for commercial freezer applications. Time tested for many years, these virtually maintenance-free unit coolers are built with Kramer reliability.

These units are suitable for low and medium temperatures in the range of -40°F to +35°F.

Features:

- Corrosion resistant unit of sturdy construction.
- Coils constructed of copper tubes and aluminum fins.
- Industrial evaporators with 4 FPI.
- Dependable rating based on laboratory tests.
- Fan motors have built-in O/L protection.
- Hot gas heated drain pan for positive condensate drainage.
- Factory wired for quick field installation.
- Optional high pressure propellar fans.

CAPACITY DATA • BTU/HR @ 10° TD⁽¹⁾

MODEL	EVAPORATOR TEMPERATURE - °F							
	+25°	+20°	+10°	0°	-10°	-20°	-30°	-40°
TV-400	45700	45000	44000	43000	41500	40000	38000	35600
TV-550	62900	62000	60500	58900	57200	55000	52300	49000
TV-750	86300	85000	83000	80000	78000	75000	71500	67000
TV-950	108600	107000	104500	101500	99000	95000	90000	85000
TV-1100	123900	122000	119000	115000	112000	108000	102500	96000
TV-1200	137100	135000	132000	128500	125000	120000	114000	107000
TV-1400	160400	158000	154000	150000	145500	140000	133000	124500
TV-1600	182700	180000	176000	171000	166500	160000	152000	142500
TV-1900	213200	210000	205000	199000	193500	186000	176500	165500

1. Rating based on R-22.

PERFORMANCE DATA

MODEL	CFM (2)	Air Throw (FT) (3)	Motors (4)		Total Fan Motor Amps (4)	
			QTY.	H.P.	230-3-60	460-3-60
TV-400D	8600	50	2	1/2 1-	3.6	1.8
TV-400PP	11700	75	2	1/2	9.6	4.8
TV-550D	8400	50	2	1/2 1-	3.6	1.8
TV-550PP	11200	75	2	1/2	9.6	4.8
TV-750D	13100	100	2	3/4	7.0	3.5
TV-750PP	17600	125	2	3	17.2	8.6
TV-950D	15000	100	2	3/4	7.0	3.5
TV-950PP	16800	125	2	3	17.2	8.6
TV-1100D	14500	100	2	3/4	7.0	3.5
TV-1100PP	16500	125	2	3	17.2	8.6
TV-1200D	20200	100	3	3/4	10.5	5.3
TV-1200PP	22600	125	3	3	25.8	12.9
TV-1400D	19500	100	3	3/4	10.5	5.3
TV-1400PP	22000	125	3	3	25.8	12.9
TV-1600D	26900	100	4	3/4	14.0	7.0
TV-1600PP	32000	125	4	3	34.4	17.2
TV-1900D	26000	100	4	3/4	14.0	7.0
TV-1900PP	31500	125	4	3	34.4	17.2

CONNECTIONS DATA

MODELS	Connections (in) (5)				
	Suction O.D.	Liquid O.D.	Hot GAS O.D.	Ext. Equal O.D.	Drain MPT
TV-400D	1-3/8	1-3/8	1-1/8	1/4	1
TV-400PP	1-3/8	1-3/8	1-1/8	1/4	1
TV-550D	1-5/8	1-5/8	1-1/8	1/4	1
TV-550PP	1-5/8	1-5/8	1-1/8	1/4	1
TV-750D	1-5/8	1-5/8	1-1/8	1/4	1
TV-750PP	1-5/8	1-5/8	1-1/8	1/4	1
TV-950D	2-1/8	1-5/8	1-1/8	1/4	1
TV-950PP	2-1/8	1-5/8	1-1/8	1/4	1
TV-1100D	2-1/8	1-5/8	1-3/8	1/4	1-1/2
TV-1100PP	2-1/8	1-5/8	1-3/8	1/4	1-1/2
TV-1200D	2-1/8	1-5/8	1-3/8	1/4	1-1/2
TV-1200PP	2-1/8	1-5/8	1-3/8	1/4	1-1/2
TV-1400D	2-1/8	1-5/8	1-3/8	1/4	1-1/2
TV-1400PP	2-1/8	1-5/8	1-3/8	1/4	1-1/2
TV-1600D	2-1/8	1-5/8	1-5/8	1/4	1-1/2
TV-1600PP	2-1/8	1-5/8	1-5/8	1/4	1-1/2
TV-1900D	(2) 2-1/8	(2)1-1/8	1-5/8	(2)1/4	1-1/2
TV-1900PP	(2) 2-1/8	(2)1-1/8	1-5/8	(2)1/4	1-1/2

2. "D" - Direct Drive High efficiency propeller fans.
 "PP" - Direct Drive with high pressure axial propeller fans.
 Do NOT use "PP" models above +25° box temperature.
 "PP" models can operate with ESP up to 0.5". At this condition CFM will drop to "D" model CFM.
3. Unrestricted air flow.
4. Single phase motors available on "D" models only, contact factory.
5. Connection sizes are based on R-22, and may vary from catalog when actual site operating conditions are provided at time of order

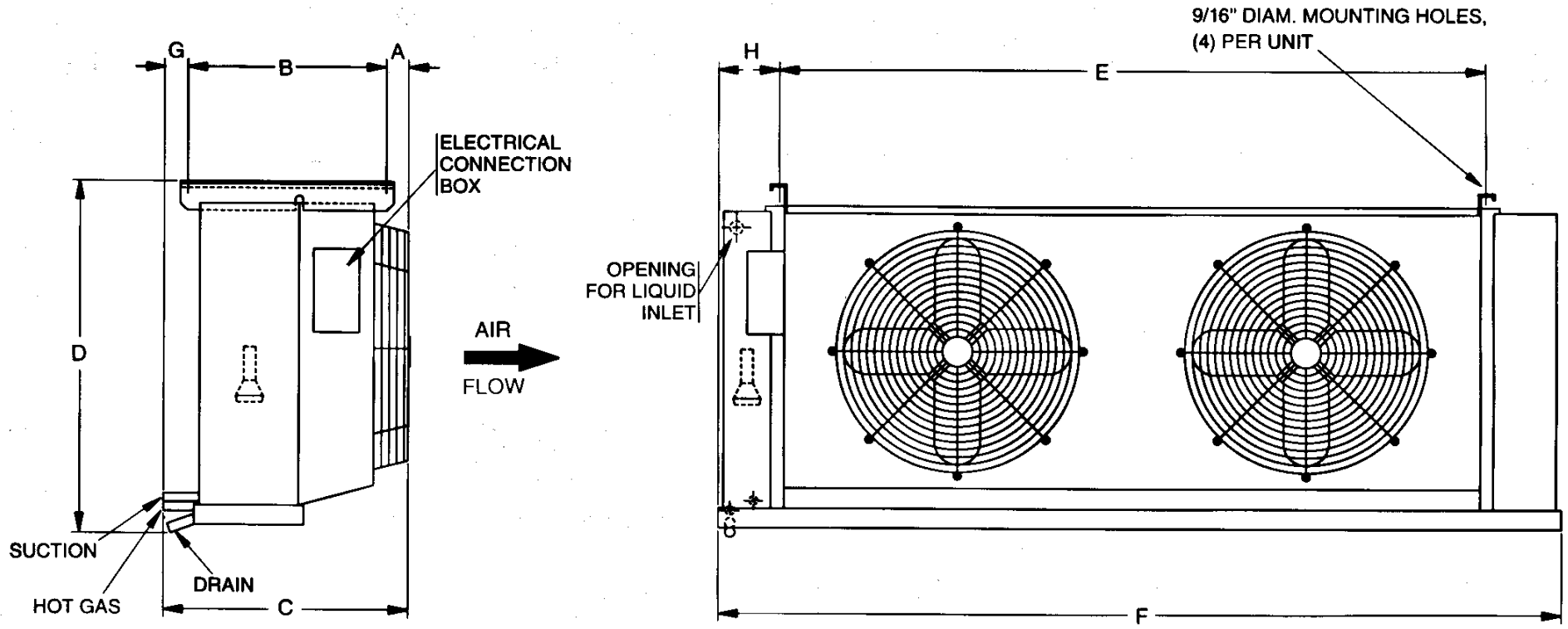
DIMENSIONAL DATA

MODEL	Dimensions (in)								Ret. Chrg. (lbs.) (6)	Approx. Ship Weight (lbs.)
	A	B	C	D	E	F	G	H		
TV-400D	3-1/4	26	31-3/4	42-7/8	58	75	2-1/2	7-1/2	8	760
TV-400PP	3-1/4	26	31-3/4	42-7/8	58	75	2-1/2	7-1/2	8	850
TV-550D	3-1/4	26	31-3/4	42-7/8	58	75	2-1/2	7-1/2	13	860
TV-550PP	3-1/4	26	31-3/4	42-7/8	58	75	2-1/2	7-1/2	13	950
TV-750D	3-7/8	26	32-3/8	42-7/8	94	111	2-1/2	7-1/2	17	1150
TV-750PP	3-7/8	26	32-3/8	42-7/8	94	111	2-1/2	7-1/2	17	1360
TV-950D	3-7/8	26	32-3/8	42-7/8	94	111	2-1/2	7-1/2	19	1260
TV-950PP	3-7/8	26	32-3/8	42-7/8	94	111	2-1/2	7-1/2	19	1440
TV-1100D	5-3/4	28	36-1/8	43-3/4	94	111	2-1/2	7-1/2	25	1350
TV-1100PP	5-3/4	28	36-1/8	43-3/4	94	111	2-1/2	7-1/2	25	1580
TV-1200D	7-1/2	28-1/4	41-3/4	47-1/4	113-1/4	136	2-3/8	11-3/8	25	2130
TV-1200PP	7-1/2	28-1/4	41-3/4	47-1/4	113-1/4	136	2-3/8	11-3/8	25	2430
TV-1400D	7-1/2	28-1/4	41-3/4	47-1/4	113-1/4	136	6	11-3/8	33	2280
TV-1400PP	7-1/2	28-1/4	41-3/4	47-1/4	113-1/4	136	6	11-3/8	33	2530
TV-1600D	7-1/2	28-1/4	41-3/4	47-1/4	151-1/4	174	6	11-3/8	33	2370
TV-1600PP	7-1/2	28-1/4	41-3/4	47-1/4	151-1/4	174	6	11-3/8	33	2670
TV-1900D	7-1/2	28-1/4	41-3/4	47-1/4	151-1/4	174	6	14-7/16	43	2580
TV-1900PP	7-1/2	28-1/4	41-3/4	47-1/4	151-1/4	174	6	14-7/16	43	2780

4 FPI

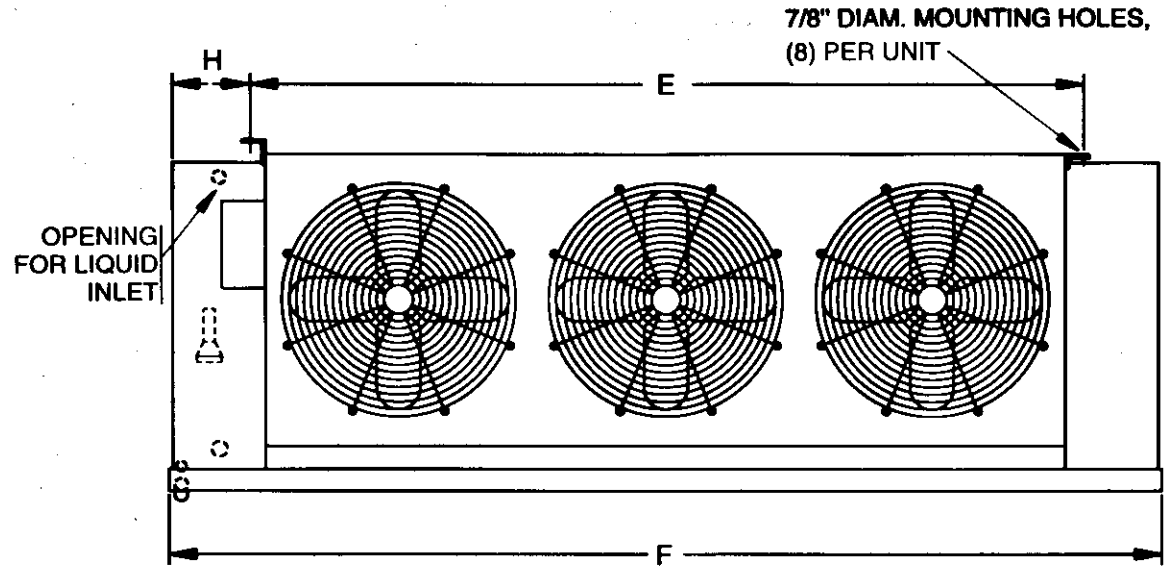
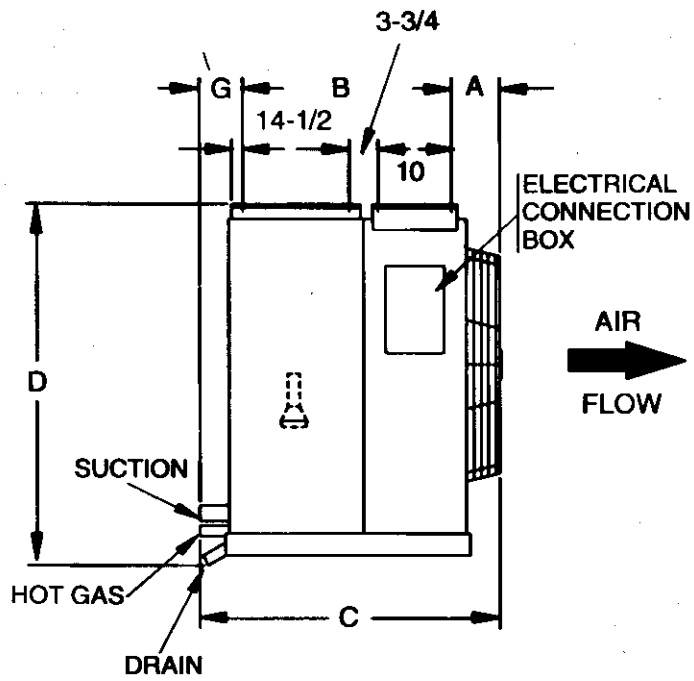
6. Based on R-22.

For your convenience the diagram(s) originally here has(have) been enlarged, and can be found just after this page in the Adobe document.



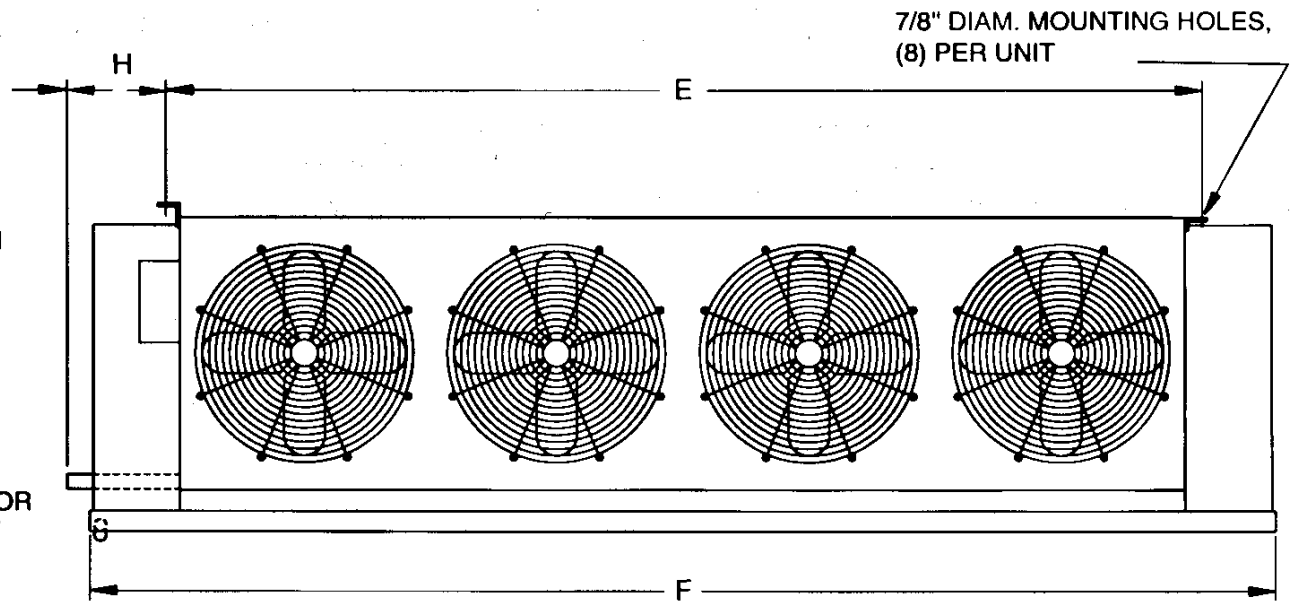
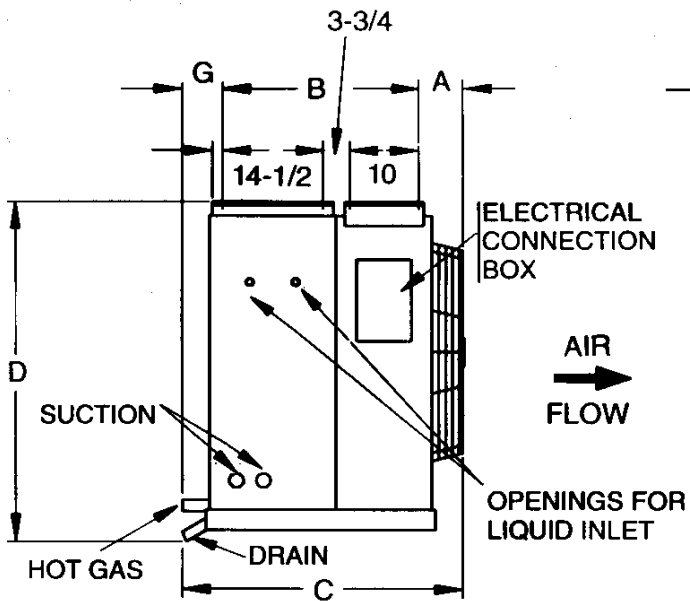
NOTES: LEFT HAND COIL IS SHOWN, AND IS STANDARD. RIGHT HAND COIL MUST BE SPECIFIED WHEN ORDERING.
ALL DIMENSIONS ARE IN INCHES.

MODELS: TV-400, 550, 750, 950, AND 1100



NOTES: LEFT HAND COIL IS SHOWN, AND IS STANDARD. RIGHT HAND COIL IS AVAILABLE AND MUST BE SPECIFIED WHEN ORDERING.
 ALL DIMENSIONS ARE IN INCHES.

MODELS: TV-1200, 1400, AND 1600



NOTES: LEFT HAND COIL IS SHOWN, AND IS STANDARD. RIGHT HAND COIL MUST BE SPECIFIED WHEN ORDERING.
ALL DIMENSIONS ARE IN INCHES.

MODEL: TV-1900

Specifications and Dimensions are subject to change without notice.

KRAMER 14230 Lochridge Boulevard / Covington, GA / 30014
Phone: 770-788-5800 Fax: 770-788-5820
www.kramerusa.net